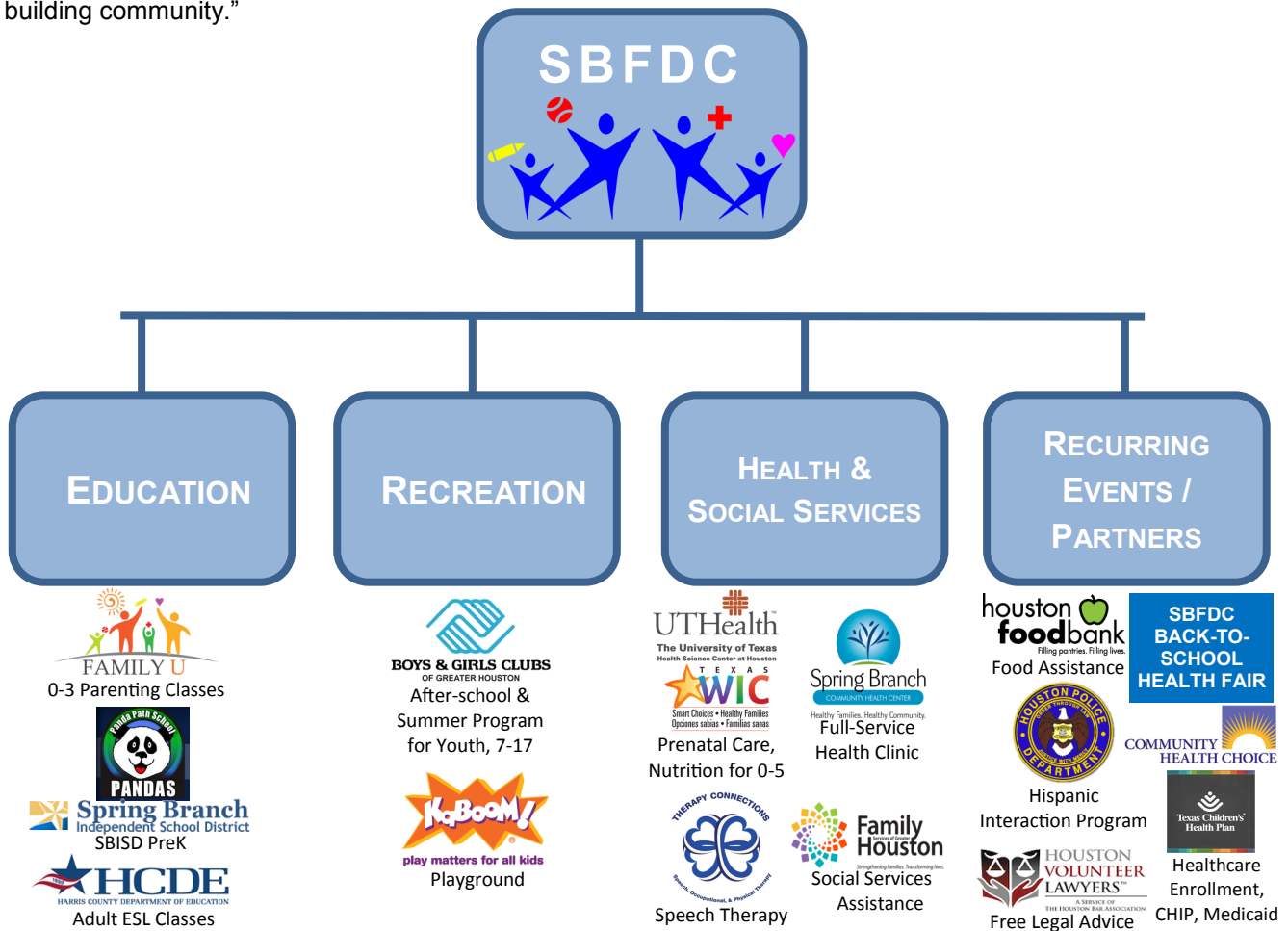




## SPRING BRANCH FAMILY DEVELOPMENT CENTER IN A NUTSHELL

The Spring Branch Family Development Center is a unique community resource that provides the surrounding area with access to resources in education, recreation, and health and social services — at a single site. “Based on the values we hold for all human beings and with respect for their diversity, the Spring Branch Family Development Center exists to enhance the well-being and development of the families of Spring Branch through a multi-agency collaboration that provides educational, recreational, health and social services.”

At the SBFDC, we believe in the power of collaboration. We work to bring excellent agencies to our site to serve the needs of our community, and encourage our various service providers to work together. We do this because we understand that it will enable us to more fully achieve our mission of “empowering families and building community.”



The SBFDC is located on an 8 acre site in the northeast part of Spring Branch, in an area that has been historically underserved. More than 6,000 residents, living in 1,500 apartment units, are within walking distance of the SBFDC—the population density is double that of New York City.

The SBFDC consists of a three-building complex with 52,000 square feet of space, an adjacent playground, and athletic fields. One building houses a pre-kindergarten program, operated by the Spring Branch Independent School District. A second building is occupied by The Boys and Girls Club of Greater Houston. The third building houses a fully-equipped medical clinic, a nutritional clinic for pregnant women, infants, and children under age 5, classrooms, offices for other social service providers, and the SBFDC administrative offices.

**8575 PITNER RD. HOUSTON, TEXAS 77080 — 713-996-8781 (MAIN) — 713-996-8784 (FAX)**  
**OUTREACH@SBFDC.ORG — WWW.SBFDC.ORG — WWW.FACEBOOK.COM/SBFDCENTER — A 501(C)(3) NON-PROFIT**